

# TSW Evolution Setup Guide for GT Legends

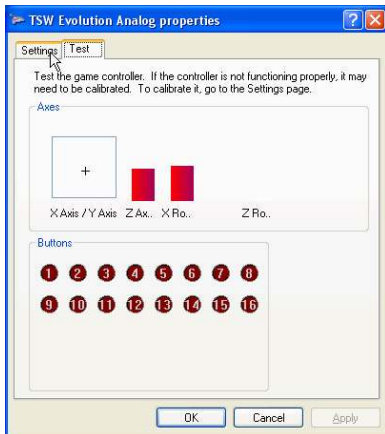


## Game Controllers

Step 1: Go to Control Panel  
Double-click on Game Controllers



Step 2: Click Properties



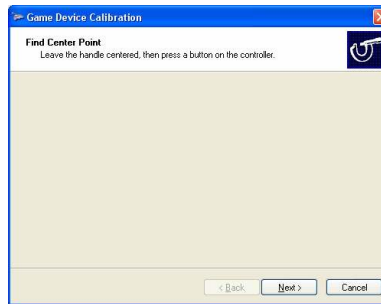
Step 3: Click Settings



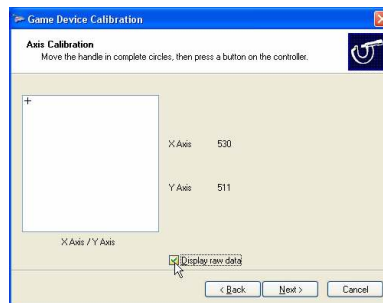
Step 4: Click Calibrate



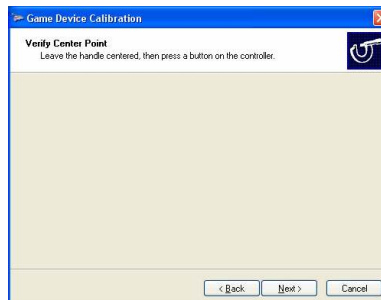
Step 5: Click Next



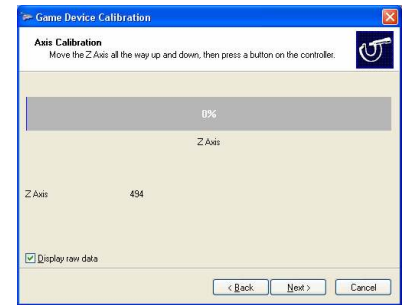
Step 6: Press a button on the controller



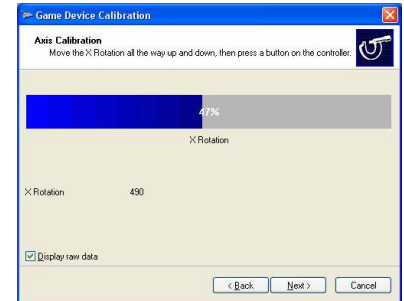
Step 7: Click on Display Raw Data  
Then turn your wheel left and right,  
press a button on the controller



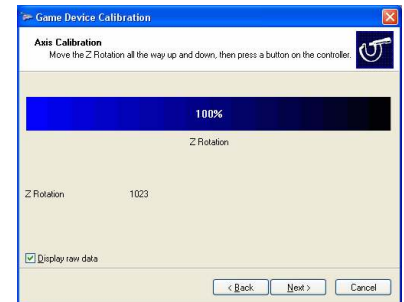
Step 8: Press a Button  
(Analog Wheels only, skip this  
step for digital wheels)



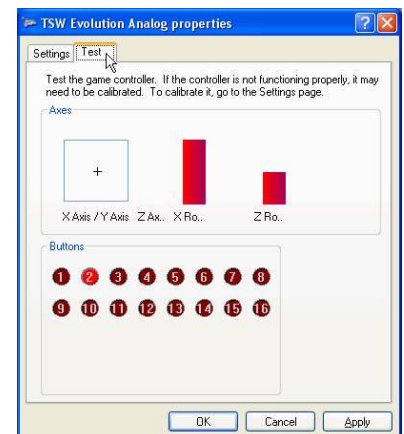
Step 9: Press the Gas Pedal  
(don't press the pedal hard)  
Then press a button on the  
controller



Step 10: Press the Brake Pedal  
(don't press the pedal hard)  
Then press a button on the  
controller



Step 11: Press the Clutch Pedal  
if you have one (don't press the  
pedal hard). Then press a button  
on the controller.



Step 12: Click Finish, test the  
controller, then press OK twice  
to exit.



STEP 1: Click on OPTIONS



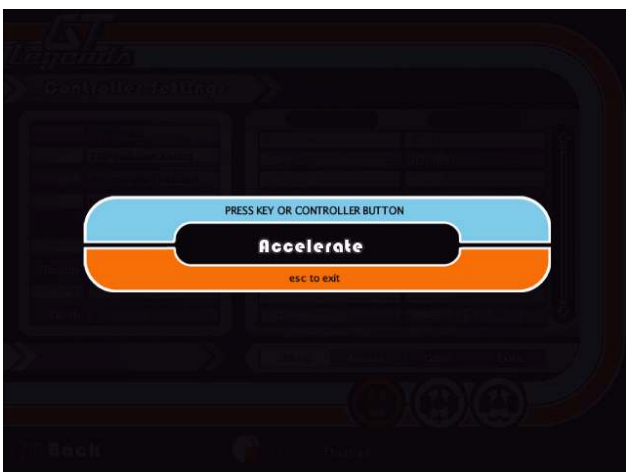
STEP 2: Click on CONTROLS



STEP 3: Click the CONTROLLER Icon



STEP 4: Click on ACCELERATE



STEP 5: Press the gas pedal, then repeat the process for each control assignment



STEP 6: Click the CONTROLLER ADVANCED Icon



STEP 7: Adjust Pedal DEADZONES to 4%



STEP 8: Test Functionality of pedals and wheel (bars should move in proportion) then click on BACK to finish