

TSW Evolution Setup Guide for GTR

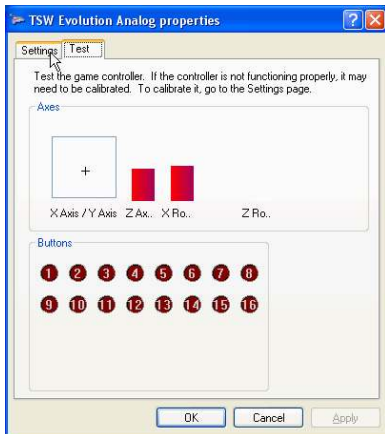


Game Controllers

Step 1: Go to Control Panel
Double-click on Game Controllers



Step 2: Click Properties



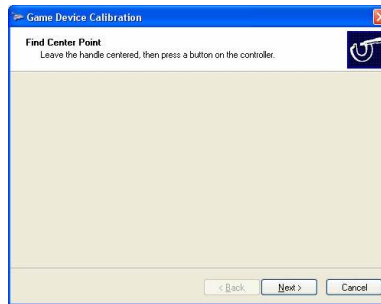
Step 3: Click Settings



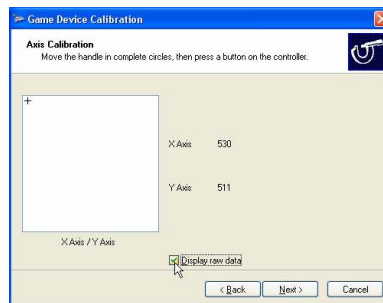
Step 4: Click Calibrate



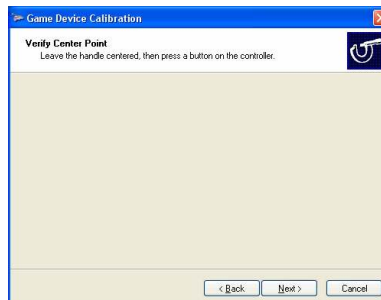
Step 5: Click Next



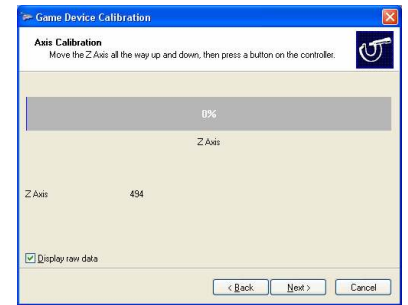
Step 6: Press a button on the controller



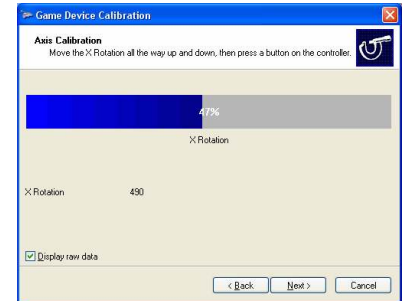
Step 7: Click on Display Raw Data
Then turn your wheel left and right,
press a button on the controller



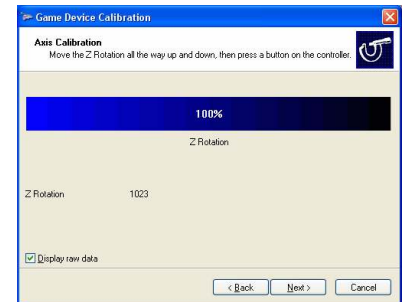
Step 8: Press a Button
(Analog Wheels only, skip this
step for digital wheels)



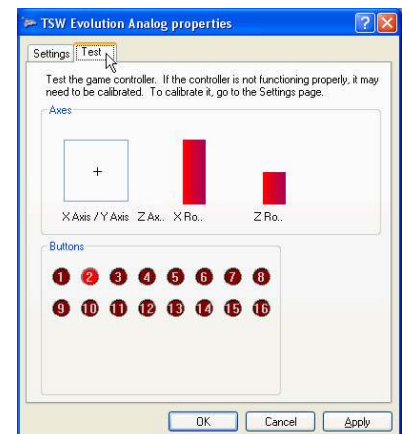
Step 9: Press the Gas Pedal
(don't press the pedal hard)
Then press a button on the
controller



Step 10: Press the Brake Pedal
(don't press the pedal hard)
Then press a button on the
controller



Step 11: Press the Clutch Pedal
if you have one (don't press the
pedal hard). Then press a button
on the controller.



Step 12: Click Finish, test the
controller, then press OK twice
to exit.



STEP 1: Click on CONTROLLER at the bottom



STEP 2: Click on BUTTONS on the right



STEP 3: Click on ACCELERATE



STEP 4: Press the gas pedal, then repeat the process for each control assignment



STEP 5: Click on ADVANCED on the right



STEP 6: Adjust Pedal DEADZONES to 3%



STEP 7: Test Functionality of pedals and wheel (colored bars should move in proportion) then click on BACK to finish