

TSW Evolution Setup Guide for Richard Burns Rally

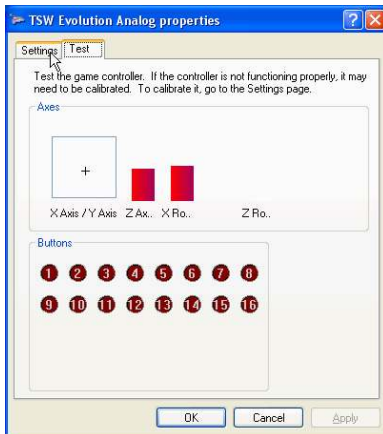


Game Controllers

Step 1: Go to Control Panel
Double-click on Game Controllers



Step 2: Click Properties



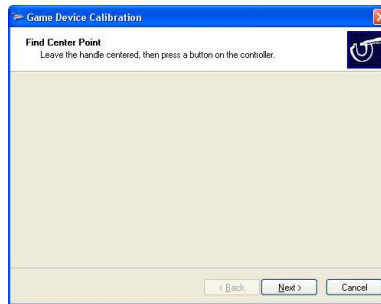
Step 3: Click Settings



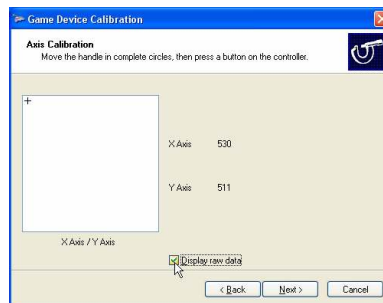
Step 4: Click Calibrate



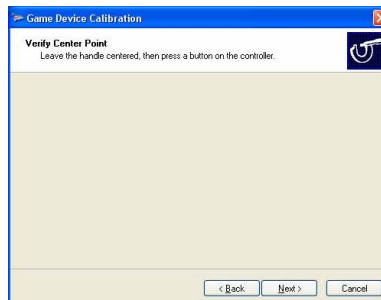
Step 5: Click Next



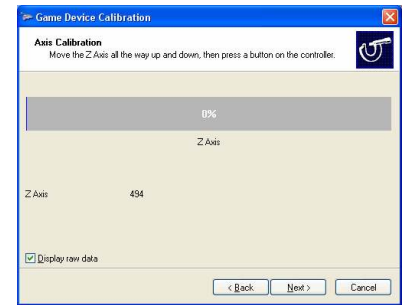
Step 6: Press a button on the controller



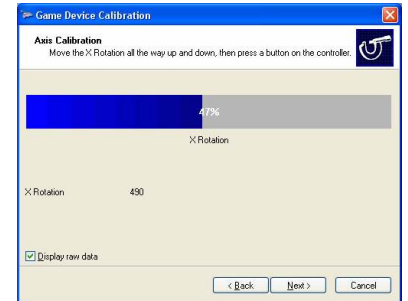
Step 7: Click on Display Raw Data
Then turn your wheel left and right,
press a button on the controller



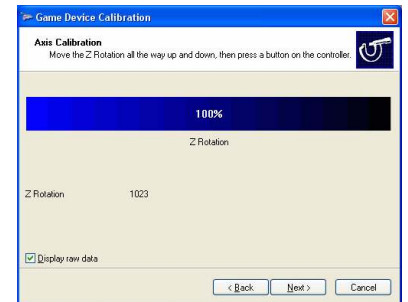
Step 8: Press a Button
(Analog Wheels only, skip this
step for digital wheels)



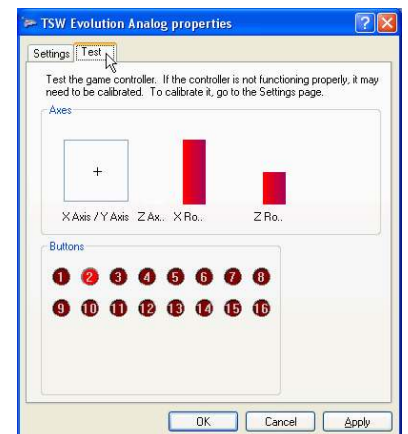
Step 9: Press the Gas Pedal
(don't press the pedal hard)
Then press a button on the
controller



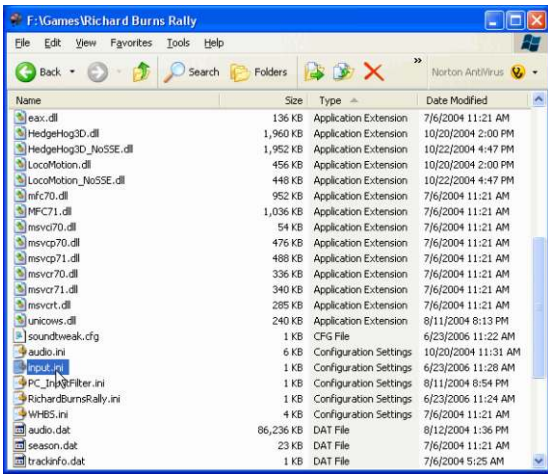
Step 10: Press the Brake Pedal
(don't press the pedal hard)
Then press a button on the
controller



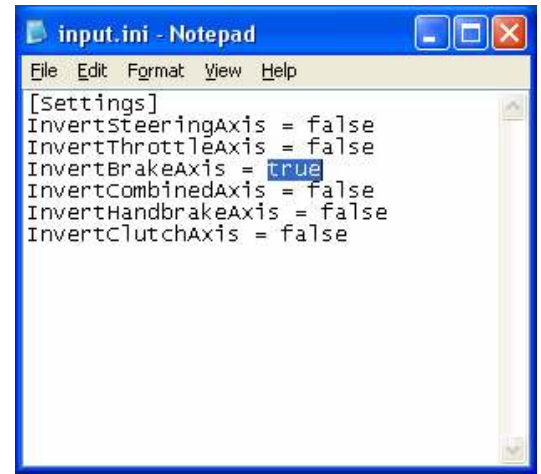
Step 11: Press the Clutch Pedal
if you have one (don't press the
pedal hard). Then press a button
on the controller.



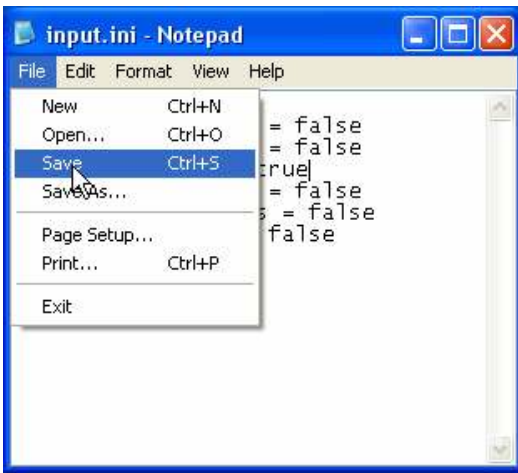
Step 12: Click Finish, test the
controller, then press OK twice
to exit.



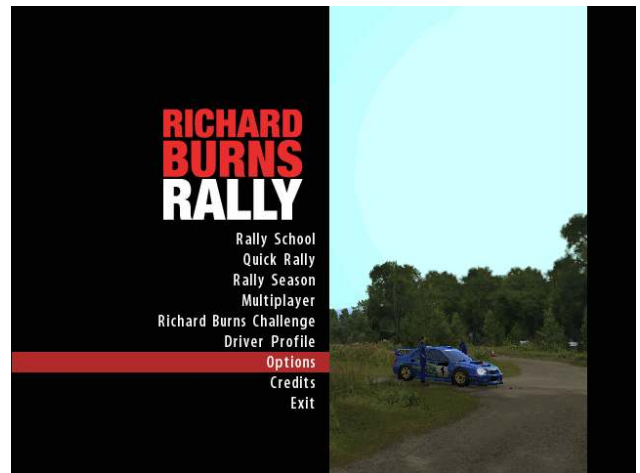
STEP 1: Locate your Richard Burns Rally Folder and open INPUT.INI with notepad (latest game patch must be installed)



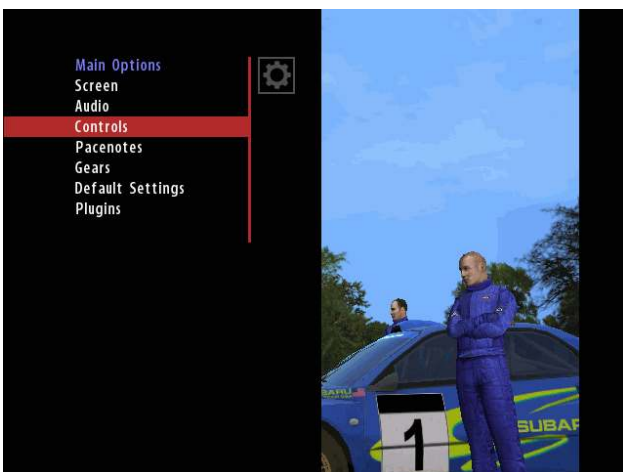
STEP 2: Change INVERT BRAKE AXIS to TRUE



STEP 3: Save the file



STEP 4: In the game go to OPTIONS



STEP 5: Go to CONTROLS



STEP 6: Select CONTROL SETUP



STEP 7: Select CONTROL SETUP again



STEP 8: Select each control assignment then apply the corresponding controller input



STEP 9: Test Functionality of pedals and wheel (bars should move in proportion) then press ESCAPE to back out



STEP 10: Select Yes